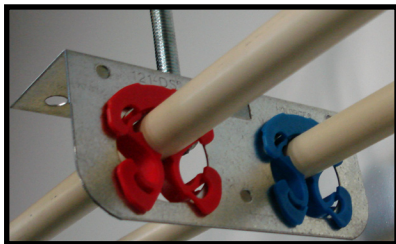
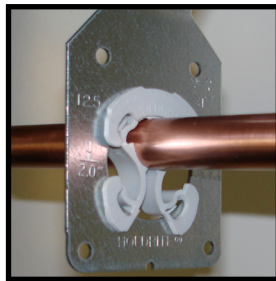
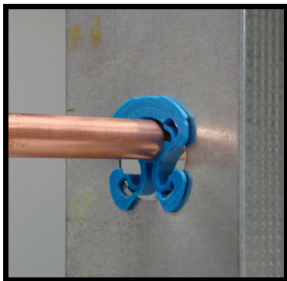


**NEW!**

# HOLDRITE® Inserts

- Ideal for Metal "Thru-Stud" & "Overhead" Applications
- Inserts fit 1-11/32" & 1-3/8" holes in 14-25 gage metal
- Integrates with HOLDRITE #121 & #125 series brackets
- Color-specific for easy water line identification (**Blue=Cold**, **Red=Hot**)



**GREY**  
(UL 94 HB Rated)

#424  
#425  
#426

**BLUE**  
(UL 94 V-2 Rated)

#424-RB  
#425-RB  
#426-RB

**RED**  
(UL 94 V-2 Rated)

#424-RR  
#425-RR  
#426-RR

**YELLOW**  
(ASTM E 84 25/50 & UL 94 V-0 Rated)

#424-S  
#425-S  
#426-S

Model #	Description	Bag Qty	List Price
424	GREY 1/2" CTS insert. Meets UL 94 HB requirements.	50	\$0.16
425	GREY 3/4" CTS insert. Meets UL 94 HB requirements.	50	\$0.18
426	GREY 1" CTS insert. Meets UL 94 HB requirements.	50	\$0.20
424-RB	BLUE 1/2" CTS insert. Meets UL 94 V-2 requirements.	50	\$0.20
425-RB	BLUE 3/4" CTS insert. Meets UL 94 V-2 requirements.	50	\$0.22
426-RB	BLUE 1" CTS insert. Meets UL 94 V-2 requirements.	50	\$0.25
424-RR	RED 1/2" CTS insert. Meets UL 94 V-2 requirements.	50	\$0.20
425-RR	RED 3/4" CTS insert. Meets UL 94 V-2 requirements.	50	\$0.22
426-RR	RED 1" CTS insert. Meets UL 94 V-2 requirements.	50	\$0.25
424-S	YELLOW 1/2" CTS insert. Meets ASTM E 84 25/50 & UL 94 V-0 requirements.	25	\$0.89
425-S	YELLOW 3/4" CTS insert. Meets ASTM E 84 25/50 & UL 94 V-0 requirements.	25	\$0.96
426-S	YELLOW 1" CTS insert. Meets ASTM E 84 25/50 & UL 94 V-0 requirements.	25	\$1.03